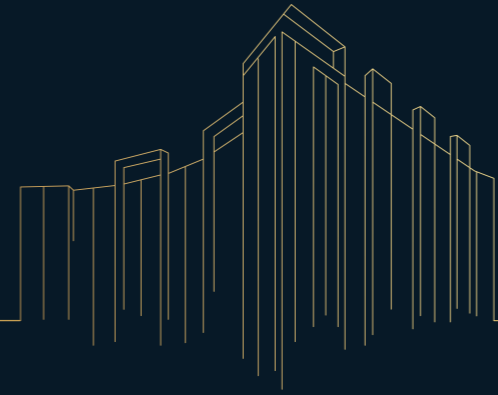




yeni bir yaşam



a brand new life



Aradığınız Değerler

The Values You Look For



Hak ettiğiniz değerlerin yaşam tarzınıza katıldığı yere hoş geldiniz. Tor Beylikdüzü...

3000 metrekareyi aşkın yeşil alanı, deprem yönetmeliğine uygun ve Avrupa normlarına göre inşa edilmiş malzeme kalitesi, hem toprakta hem de gökyüzünde yemyeşil doğanın keyfini sunması ve muhteşem sosyal tesisleriyle Tor Beylikdüzü aradığınız her şeyi size fazlasıyla sunuyor.

Welcome to Tor Beylikdüzü where the values you deserve become a part of your lifestyle.

Tor Beylikdüzü offers everything you are looking for with more than 3000 square meters of green space, material quality built in accordance with the earthquake regulations and European norms, the pleasure of nature's green felt both in the ground and in the sky, and its magnificent social facilities.



TOR HOLDING

Tor Holding'in temelleri 1990'lı yıllarda İbrahim Halil Torun tarafından kurulan Tekstil firmasına dayanmaktadır. Kuruluşunu takip eden yıllarda İnşaat, Yatırım, Turizm ve Tarım alanlarında faaliyetlerini genişleterek yatay ve dikey büyüme politikası izlemiş ve 2020 yılında şirketler grubu Tor Holding çatısı altında toplanmıştır.

2000'li yılların başında ikinci jenerasyonun yönetime dahil olması ile teknoloji ve inovasyona verdiği önemi artırarak dijital dönüşümünü tamamlayan şirketler grubu, yenilikçi yaklaşımlar ve yatırıma verdiği önemle büyüyen, her ekonomik şarta ve değişime ayak uydurabilen bir holding haline gelmiştir.

The foundations of Tor Holding are based on the textile company established by İbrahim Halil Torun in the 1990s. In the years following its establishment, it applied a horizontal and vertical growth policy by expanding its activities in the fields of construction, investment, tourism and agriculture. In 2020, the group of companies gathered under the roof of Tor Holding.

With the inclusion of the second generation in the management in early 2000s, the group of companies completed their digital transformation by increasing their focus on technology and innovation hence becoming a corporate group that can adapt to all economic conditions and changes.



“

Yatırımda kâr, yaşamda kalite, hizmette süreklilik ve sadakat değerlerini taşıyan bu projeye imza atmış olmanın mutluluğunu yaşıyor, sizleri de bu projemizin bir parçası olmak için Tor Beylikdüzü'ne bekliyoruz.

As Tor Holding, we are proud to have carried out this project which represents the principles of profit in investment, quality in life, contuniuity in service and loyalty. We cannot wait to see you become a part of it.

”

İbrahim Halil Torun

Yüzyıllardır Deęerini Koruyan Bir Metropol

Kurulduęu günden beri dünyanın en büyük ve kalabalık şehirlerinden birisi olan İstanbul, kadim zamanlardaki önemini günümüze taşıırken kendisini her daim yenileyerek sakinlerini ve ziyaretçilerini büyülemeye devam etmiştir.

Gelenek ve modernlięin, eşsiz doğal güzellikler ile insan elinin ürettięi en etkileyici eserlerin bir arada var olduęu bu sihirli şehir, en büyük ilham kaynaęımız olmayı sürdürüyor.

A Metropolis That Preserves Its Value for Centuries

One of the biggest and most populated cities in the world for ages, Istanbul preserves its importance while continuously renewing itself and mesmerizing its visitors and residents.

Combining tradition and modernity, unique natural beauties and the most impressive works of humankind, this magical city continues to be the biggest inspiration for us.



BEYLİKDÜZÜ'NÜN YÜKSELEN DEĞERİ: TOR BEYLİKDÜZÜ

İstanbul'un en hızlı gelişen ve değer kazanan ilçesi Beylikdüzü, bölgedeki yatırımlar ve projelerle şehrin en yeni cazibe merkezi haline gelirken, düzenli şehir yapısı ve geniş yeşil alanlarıyla aile yaşamı için ideal standartları sunmaktadır.

İstanbul'un en önemli yolları E5 ve E6'nın bağlantı noktası üzerinde yer alan Tor Beylikdüzü; kültür, alışveriş ve ticaret merkezleri, doğal parklar ve marinaya olan yakınlığıyla sizleri yatırımda kar, yaşamda kalite, hizmette süreklilik değerlerini taşıyan mutlu bir yaşama davet ediyor.

THE RISING STAR OF BEYLİKDÜZÜ: TOR BEYLİKDÜZÜ

As the fastest developing and growing district of Istanbul, Beylikdüzü has become the center of attraction with the investments and new projects in the region while offering the ideal standards for family life with its modern urban planning and vast green areas.

Located on the intersection of the most important highways in Istanbul, E5 and E6, Tor Beylikdüzü makes a difference with its excellent location where you will be closely located to culture and shopping centers, parks and marina. The rising star of Beylikdüzü invites you to a life that represents the principles of profit in investment, quality in life and continuity of service at Tor Beylikdüzü.



Modern Mimari'de Lüks Detaylar

Kapı kulplarına kadar tüm detayların titizlikle düşünüldüğü bir proje hayal edin. Tor Beylikdüzü'nde attığınız her adım ne kadar değerli olduğunuzu size tekrar hatırlatacak. İnce detaylardaki malzeme seçimleri ve usta işçilikle hazırlanan iç mekanlarda modern ve lüks bir atmosfer tercih edildi.

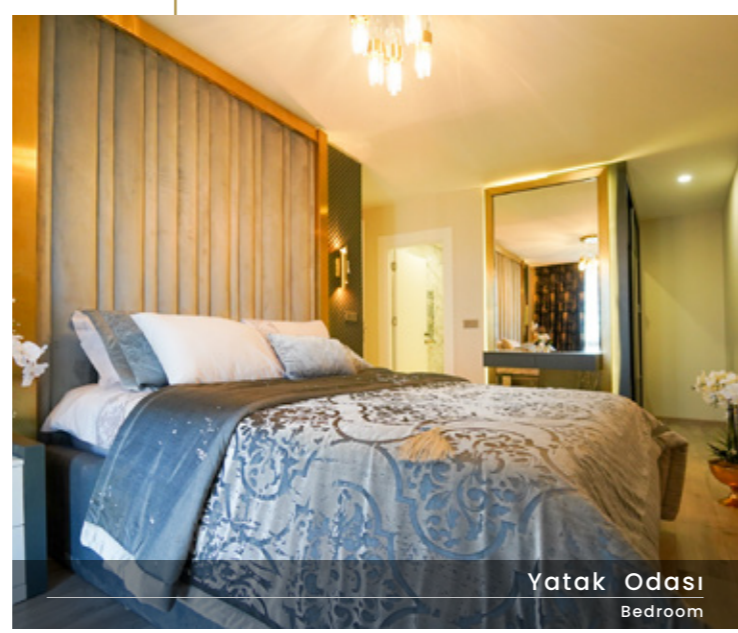
Luxury Details in Modern Architecture

Imagine a project in which all details are meticulously considered, from interior design to door handles. Every step you take in Tor Beylikdüzü residences will remind you how precious you are. A modern and luxury atmosphere was preferred in the interior design prepared with delicate material selection and master craftsmanship.





Oturma Odası
Living Room



Yatak Odası
Bedroom



Banyo
Bathroom



Banyo
Bathroom



Mutfak
Kitchen



Çocuk Odası
Children's Room



Akıllı Ev Sistemi
Smart Home System



Detaylarda üstünlük
Excellence in detail

Sağlığı Temel Alan Bina Yapısı

Tor Beylikdüzü çevreci ve insan sağlığını ön planda tutan bir projedir. Sürdürülebilir bir dünya ve insan ömrünü uzatan bir yaşam tarzı hedefimizi Tor Beylikdüzü projesinin dış cephelerine de yansittik. Dış duvarların yapımında özel tasarlanmış gözenekli yapısı sayesinde ses ve ısı yalıtımı sağlayan delikli tuğlalar kullanıldı. Dış ısı yalıtımında ise yanmayan ve bozulmayan, küflenmeyen, üretiminde petrokimya ürünü kullanılmayan özel üretilmiş taş yünü kullanıldı.

A Building Structure Based on a Healthy Lifestyle

Tor Beylikdüzü is an eco-friendly project that prioritizes human health. We implemented our goal of a sustainable world and a lifestyle that prolongs human life on the exteriors of the Tor Beylikdüzü project. Perforated bricks that provide acoustic and thermal insulation thanks to their specially designed porous structure were used in the construction of the outer walls. Specially produced rock wool, which doesn't burn, deteriorate, mould and contain petrochemical products, was used in the external thermal insulation.



Sosyal Alanlar

Social Areas



Tor Beylikdüzü'nün sosyal tesislerinde sporun ve sağlıklı yaşamın keyfini çıkarın.

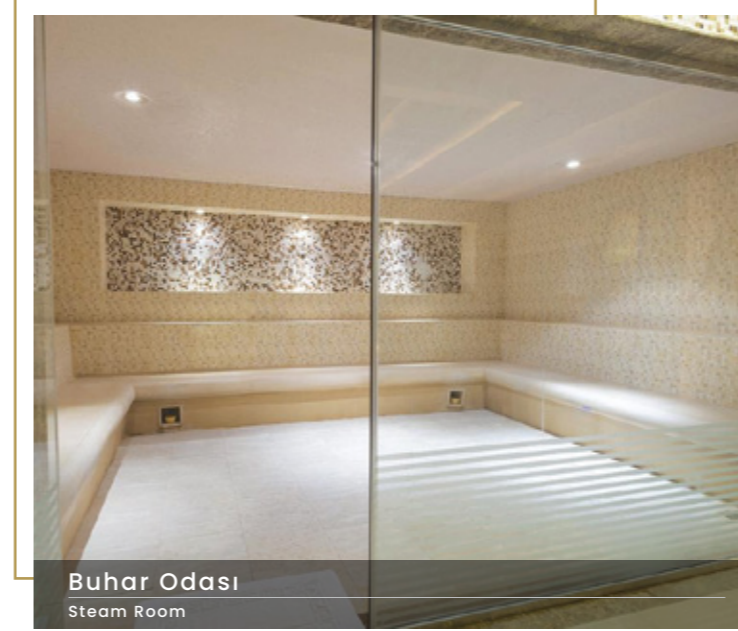
Enjoy sports and healthy lifestyle in the excellent social facilities of Tor Beylikdüzü.



Basketbol Sahası
Basketball Court



Spor Salonu
Fitness Center



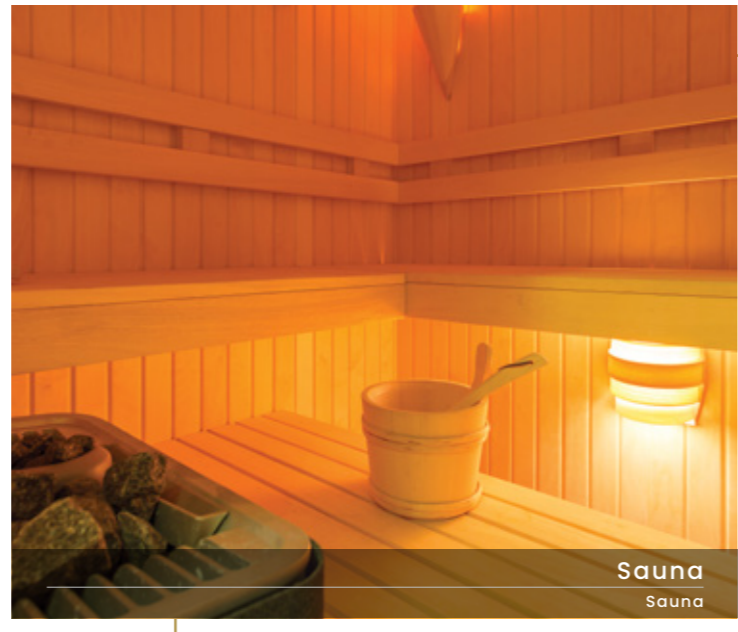
Buhar Odası
Steam Room



Peyzaj Alanı
Landscape Area



Çocuk Oyun Alanı
Children's Playground



Sauna
Sauna



Geniş Havuz
Large Pool



Minikler Havuzu
Kids Pool



Tor Beylikdüzü yalnızca bir yaşam alanı değil, aynı zamanda kaliteli bir yaşam tarzı sunmaktadır. Bu yaşam tarzında hak ettiğiniz değeri, arzu ettiğiniz lüksü ve huzurlu bir yaşamın keyfini sonuna kadar elde edeceksiniz. Tor Beylikdüzü'nün vaat ettiklerine kısaca göz atalım.

Tor Beylikdüzü presents not only a living space, but also a quality lifestyle. In this lifestyle, you will capture the value you deserve, the luxury you desire and the pleasure of a peaceful life to the fullest. Let's take a brief look at what Tor Beylikdüzü offers to its residents.



Tor Beylikdüzü'nde şehrin merkezinde yaşamın avantajlarından yararlanırken doğal hayatın sükunetini de hissedeceksiniz. Yeşili hayatınızın merkezine koyan peyzaj tasarımı sayesinde sevdiklerinizle yapacağınız yürüyüşlerde oksijene ve huzura doycacaksınız.

At Tor Beylikdüzü, you will enjoy the benefits of living at the heart of the city and the serenity of nature at the same time. The unique landscape design makes sure that you have the most of tranquility and fresh air during your walks with your loved ones.



Toplam 1100m²'lik geniş sosyal tesislerde; bay ve bayan sakinlerimize ayrı alanlarda sağlık ve spor hizmetleri sunuyoruz.

Social facilities located on a total of 1100 m² area offer health and sports services to our male and female residents in separate areas.





Egzersiz ve sağlıklı yaşam konusunda beklentilerinizi fazlasıyla karşılayacak kapalı tesislerin yanı sıra spor keyfini açık alanlara taşıyan basketbol sahası ve çocuk oyun parkıyla her gününüzü zinde geçirebileceksiniz.

In addition to the excellent indoor facilities to meet your expectations regarding fitness and wellness, you and your family will be able to spend your time fresh and fit at outdoor areas like basketball court and children's playground.





Sauna ve buhar odası içerisinde günün stresini atabilir, ruhunuzu dinlendirebilirsiniz. Kadim bir Türk geleneği olan hamam keyfini sürebilirsiniz.

You can relieve the stress of the day by taking a well-earned rest to relax your body and soul in the sauna and steam room. You can also enjoy the traditional Turkish bath.





Tor Beylikdüzü'nün geniş havuzunu ister antrenman amaçlı ister ferahlamak için kullanın. Siz ana havuzda kulaç atarken çocuklarınız da onlar için özel tasarlanan minikler havuzunda yüzmenin keyfini çıkaracak.

For serious workouts to beat the clock or just for a refreshing swim, the large pool of Tor Beylikdüzü is at your service! Enjoy the main pool while your children swim in the pool specially designed for them.





Doğanın huzurunu sizin olduğunuz her yere taşımayı hedefleyen Tor Beylikdüzü'nde 1075 metrekarelik zemin kat peyzaj alanına ek olarak çatı katında yer alan 2000 metrekarelik özel gökyüzü peyzajı sizleri bekliyor.

Aiming to bring the serenity of nature to wherever you are, a ground floor landscape of 1075 m² greets you at the entrance, while an exclusive skyline landscape of over 2000 m² located on the rooftop is waiting for you at Tor Beylikdüzü.



Yapının çatısında özel bir sistemle depolanan yağmur suları site içi ve çatı peyzajının sulanmasında kullanılırken sürdürülebilirlik ve doğaya saygı hedeflerimizin lafta kalmadığını göreceksiniz.

Peyzaj dışındaki tüm sosyal alanlarımızda kadın-erkek ayrı alanlar mevcuttur.

Collecting and storing the rainwater with a special system to use for watering the landscapes, it shows that sustainability and respect for nature are much more than words for us.

There are separate areas for men and women in all our social facilities except outdoors.

Kat Planları

Floor Plans



Tor Beylikdüzü'nde her istek ve ihtiyaca uygun daire seçenekleri sizleri bekliyor.

Flat options that appeal to every need await you at Tor Beylikdüzü.



1+1
Flat A1+1
Flat A

*Zarif, işlevsel, Modern.
Konforlu şehir yaşamına dair
her şey.*

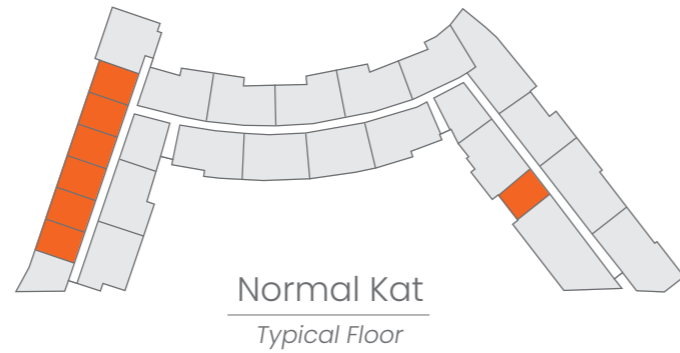
*Elegant, Functional, Modern.
Everything about comfortable
city life.*

Detay Bilgileri

m²

Brüt	73.44
Net	40.80

1	Salon + Mutfak	24.10
2	Yatak Odası	11.85
3	Banyo & WC	4.86
4	Balkon	2.47



Normal Kat
Typical Floor

Details

m²

Gross	73.44
Net	40.80

1	Living Room + Kitchen	24.10
2	Bedroom	11.85
3	Bathroom & WC	4.86
4	Balcony	2.47

1+1 Flat At

1+1 Flat At

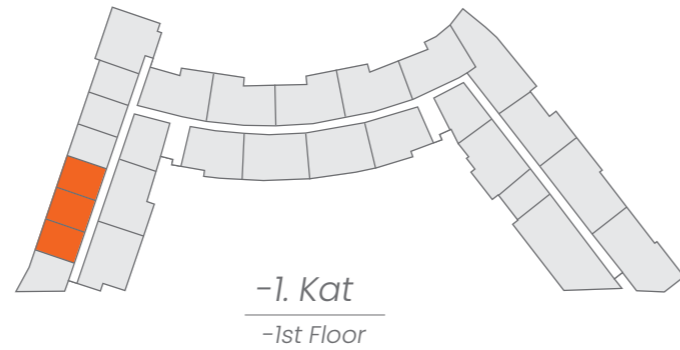


*Zarif, işlevsel, Modern.
Konforlu şehir yaşamına dair
her şey.*

*Elegant, Functional, Modern.
Everything about comfortable
city life.*

Detay Bilgileri m²

Detay Bilgileri	m ²
Brüt	113.73
Net	39.07
1 Salon + Mutfak	23.17
2 Yatak Odası	11.04
3 Banyo & WC	4.86
4 Teras	51.12



Details m²

Details	m ²
Gross	113.73
Net	39.07
1 Living Room + Kitchen	23.17
2 Bedroom	11.04
3 Bathroom & WC	4.86
4 Terrace	51.12

1+1
Flat B1+1
Flat B

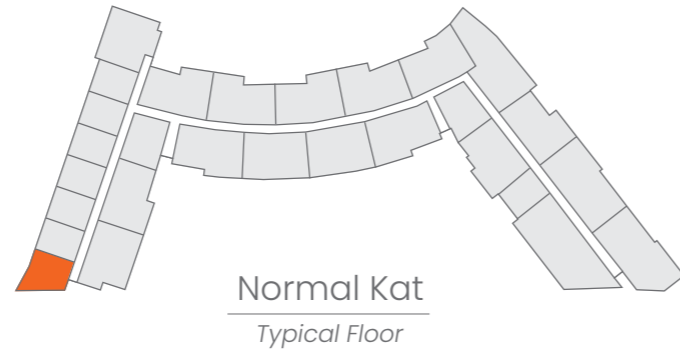
*Zarif, işlevsel, Modern.
Konforlu şehir yaşamına dair
her şey.*

*Elegant, Functional, Modern.
Everything about comfortable
city life.*

Detay Bilgileri

m²

Brüt	73.71
Net	40.98
1 Salon + Mutfak	24.95
2 Yatak Odası	11.80
3 Banyo & WC	4.23
4 Balkon	5.56



Details

m²

Gross	73.71
Net	40.98
1 Living Room + Kitchen	24.95
2 Bedroom	11.80
3 Bathroom & WC	4.23
4 Balcony	5.56

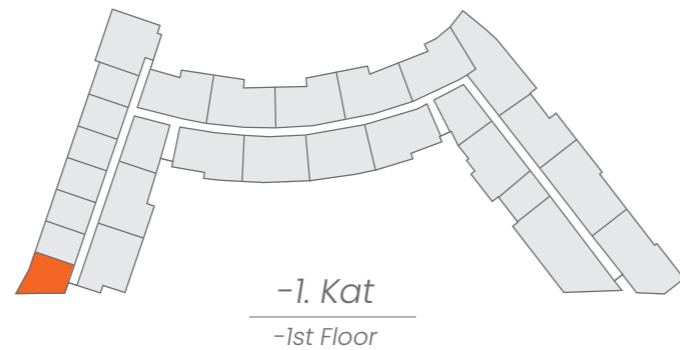
KAT PLANLARI

1+1 Flat Bt



Detay Bilgileri

	m ²
Brüt	98.02
Net	35.83
1 Salon + Mutfak	24.08
2 Yatak Odası	8.10
3 Banyo & WC	3.65
4 Teras	36.18



FLOOR PLANS

1+1 Flat Bt



*Zarif, işlevsel, Modern.
Konforlu şehir yaşamına dair
her şey.*

*Elegant, Functional, Modern.
Everything about comfortable
city life.*

Details

	m ²
Gross	98.02
Net	35.83
1 Living Room + Kitchen	24.08
2 Bedroom	8.10
3 Bathroom & WC	3.65
4 Terrace	36.18

2+1
Flat A2+1
Flat A

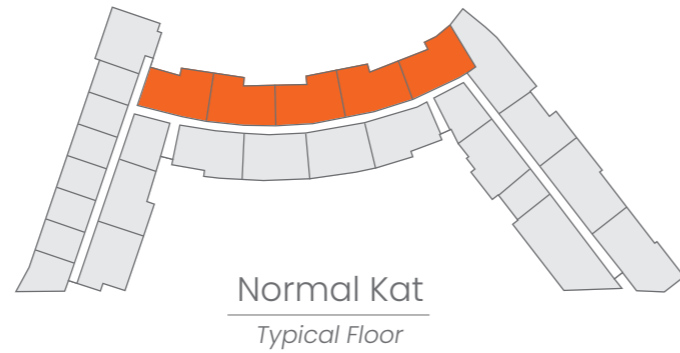
Lüks ve modern mimariyi geniş yaşam alanlarında sunuyoruz...

Offering luxury and modern architecture in large living spaces...

Detay Bilgileri

	m ²
Brüt	132.85
Net	80.50

1	Salon	25.14
2	Mutfak	10.49
3	Oda 1	18.14
4	Oda 2	9.73
5	Hol	9.54
6	Banyo & WC 1	4.09
7	Banyo & WC 2	3.37
8	Balkon	3.88



Details

	m ²
Gross	132.85
Net	80.50

1	Living Room	25.14
2	Kitchen	10.49
3	Room 1	18.14
4	Room 2	9.73
5	Hall	9.54
6	Bathroom & WC 1	4.09
7	Bathroom & WC 2	3.37
8	Balcony	3.88

2+1

Flat B

2+1

Flat B



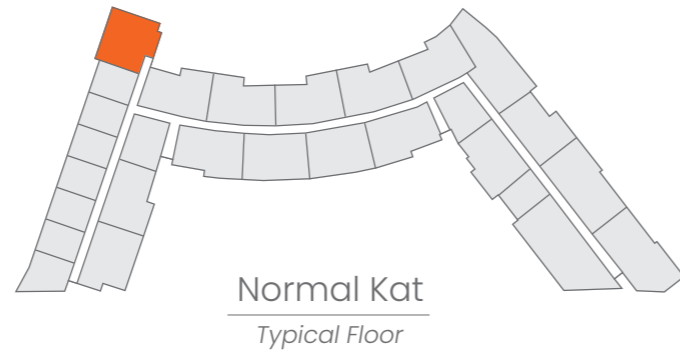
Lüks ve modern mimariyi geniş yaşam alanlarında sunuyoruz...

Offering luxury and modern architecture in large living spaces...

Detay Bilgileri

	m ²
Brüt	145.64
Net	80.90

1	Salon	24.96
2	Mutfak	9.57
3	Oda 1	15.84
4	Oda 2	11.77
5	Hol	11.53
6	Banyo & WC 1	3.83
7	Banyo & WC 2	3.40
8	Balkon	4.28



Details

	m ²
Gross	145.64
Net	80.90

1	Living Room	24.96
2	Kitchen	9.57
3	Room 1	15.84
4	Room 2	11.77
5	Hall	11.53
6	Bathroom & WC 1	3.83
7	Bathroom & WC 2	3.40
8	Balcony	4.28

2+1
Flat C2+1
Flat C

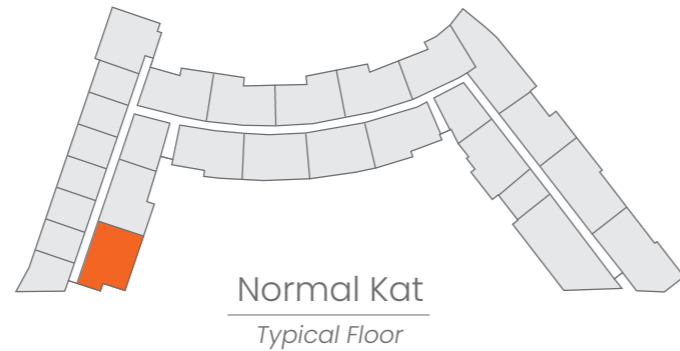
Lüks ve modern mimariyi geniş yaşam alanlarında sunuyoruz...

Offering luxury and modern architecture in large living spaces...

Detay Bilgileri

	m ²
Brüt	144.22
Net	80.11

1	Salon	24.28
2	Mutfak	8.97
3	Oda 1	18.43
4	Oda 2	10.20
5	Hol	9.50
6	Banyo & WC 1	5.31
7	Banyo & WC 2	3.42
8	Balkon	4.55



Details

	m ²
Gross	144.22
Net	80.11

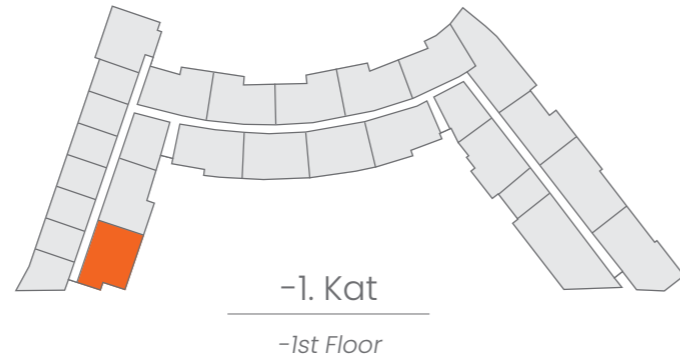
1	Living Room	24.28
2	Kitchen	8.97
3	Room 1	18.43
4	Room 2	10.20
5	Hall	9.50
6	Bathroom & WC 1	5.31
7	Bathroom & WC 2	3.42
8	Balcony	4.55

KAT PLANLARI

2+1 Flat Ct



Detay Bilgileri	m ²
Brüt	147.31
Net	80
1 Salon	21.86
2 Mutfak	11.28
3 Oda 1	18.43
4 Oda 2	10.20
5 Hol	9.50
6 Banyo & WC 1	5.31
7 Banyo & WC 2	3.42
8 Teras	15.37



FLOOR PLANS

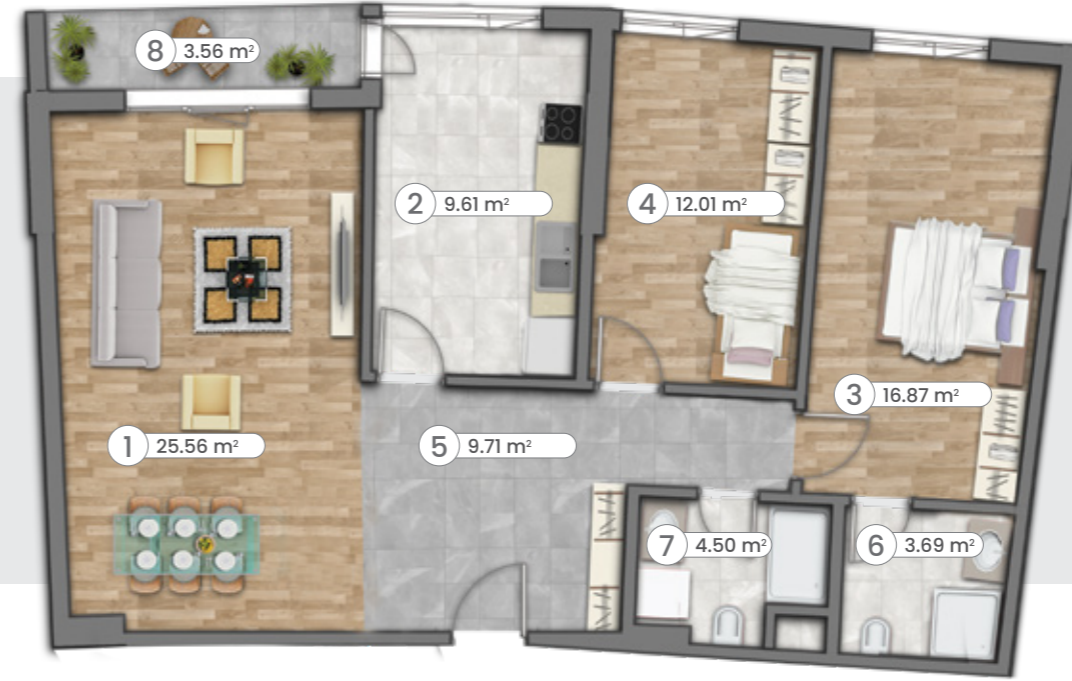
2+1 Flat Ct



Lüks ve modern mimariyi geniş yaşam alanlarında sunuyoruz...

Offering luxury and modern architecture in large living spaces...

Details	m ²
Gross	147.31
Net	80
1 Living Room	21.86
2 Kitchen	11.28
3 Room 1	18.43
4 Room 2	10.20
5 Hall	9.50
6 Bathroom & WC 1	5.31
7 Bathroom & WC 2	3.42
8 Terrace	15.37

2+1
Flat D2+1
Flat D

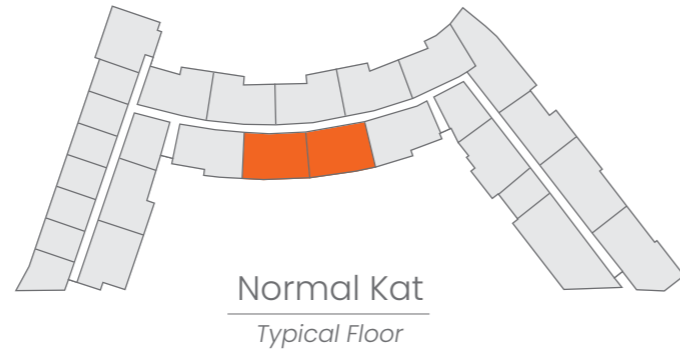
Lüks ve modern mimariyi geniş yaşam alanlarında sunuyoruz...

Offering luxury and modern architecture in large living spaces...

Detay Bilgileri

	m ²
Brüt	147.33
Net	81.95

1	Salon	25.56
2	Mutfak	9.61
3	Oda 1	16.87
4	Oda 2	12.01
5	Hol	9.71
6	Banyo & WC 1	3.69
7	Banyo & WC 2	4.50
8	Balkon	3.56



Details

	m ²
Gross	147.33
Net	81.95

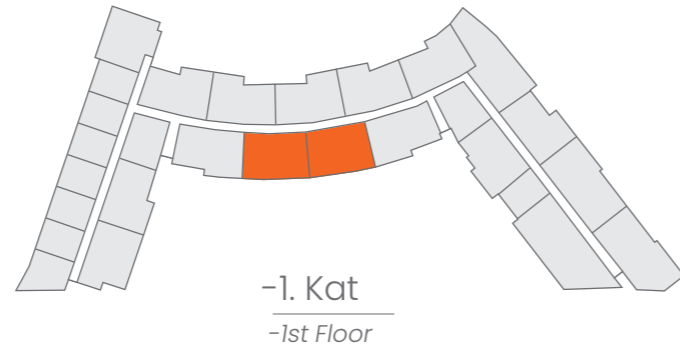
1	Living Room	25.56
2	Kitchen	9.61
3	Room 1	16.87
4	Room 2	12.01
5	Hall	9.71
6	Bathroom & WC 1	3.69
7	Bathroom & WC 2	4.50
8	Balcony	3.56

KAT PLANLARI

2+1 Flat Dt



Detay Bilgileri	m ²
Brüt	141.97
Net	73.91
1 Salon	25.55
2 Mutfak	7.63
3 Oda 1	13.70
4 Oda 2	9.25
5 Hol	9.59
6 Banyo & WC 1	4.50
7 Banyo & WC 2	3.69
8 Teras	14.79



-1. Kat
-1st Floor

FLOOR PLANS

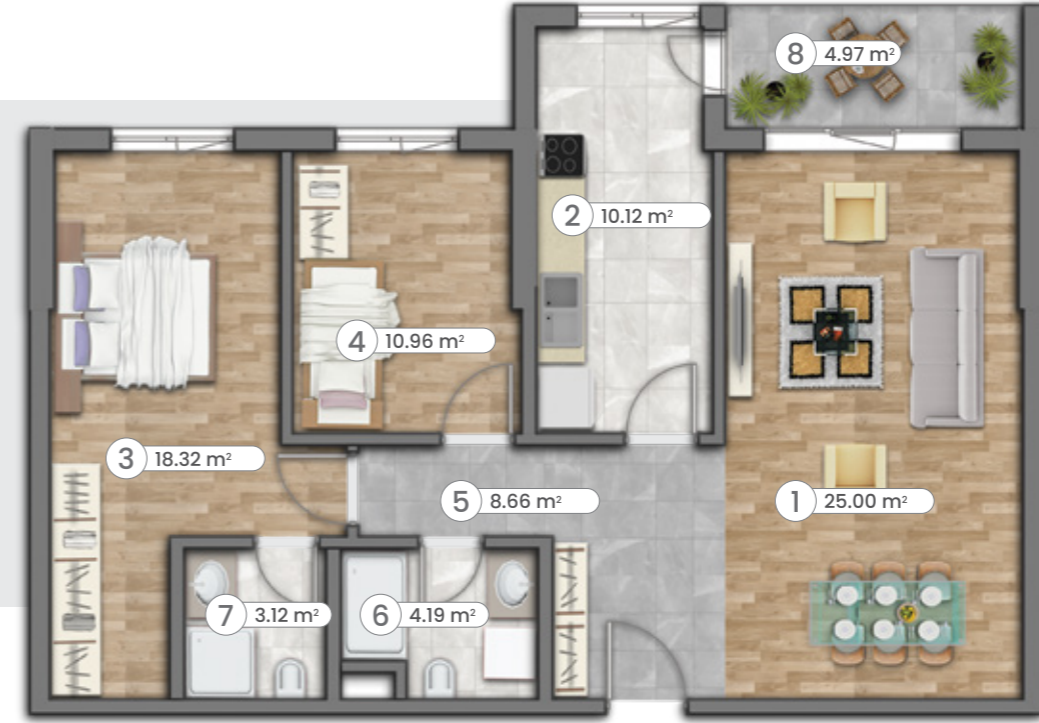
2+1 Flat Dt



Lüks ve modern mimariyi geniş yaşam alanlarında sunuyoruz...

Offering luxury and modern architecture in large living spaces...

Details	m ²
Gross	141.97
Net	73.91
1 Living Room	25.55
2 Kitchen	7.63
3 Room 1	13.70
4 Room 2	9.25
5 Hall	9.59
6 Bathroom & WC 1	4.50
7 Bathroom & WC 2	3.69
8 Terrace	14.79

2+1
Flat E2+1
Flat E

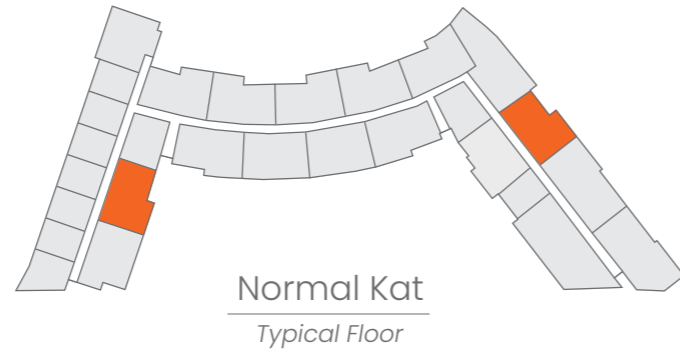
Lüks ve modern mimariyi geniş yaşam alanlarında sunuyoruz...

Offering luxury and modern architecture in large living spaces...

Detay Bilgileri

	m ²
Brüt	146.12
Net	80.38

1	Salon	25.00
2	Mutfak	10.12
3	Oda 1	18.32
4	Oda 2	10.96
5	Hol	8.66
6	Banyo & WC 1	4.19
7	Banyo & WC 2	3.12
8	Balkon	4.97



Details

	m ²
Gross	146.12
Net	80.38

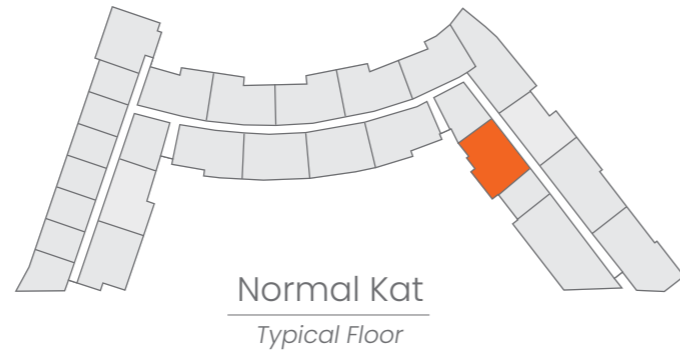
1	Living Room	25.00
2	Kitchen	10.12
3	Room 1	18.32
4	Room 2	10.96
5	Hall	8.66
6	Bathroom & WC 1	4.19
7	Bathroom & WC 2	3.12
8	Balcony	4.97

KAT PLANLARI

2+1 Flat Es

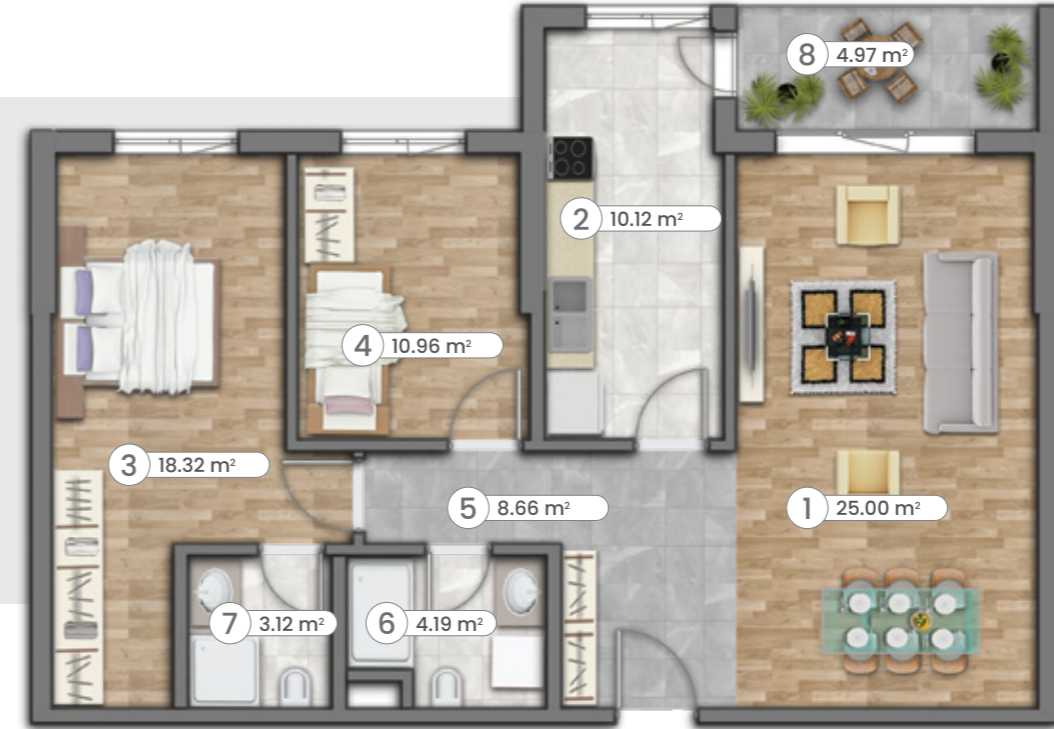


Detay Bilgileri	m ²
Brüt	146.12
Net	80.38
1 Salon	25.00
2 Mutfak	10.12
3 Oda 1	18.32
4 Oda 2	10.96
5 Hol	8.66
6 Banyo & WC 1	4.19
7 Banyo & WC 2	3.12
8 Balkon	4.97



FLOOR PLANS

2+1 Flat Es



Lüks ve modern mimariyi geniş yaşam alanlarında sunuyoruz...

Offering luxury and modern architecture in large living spaces...

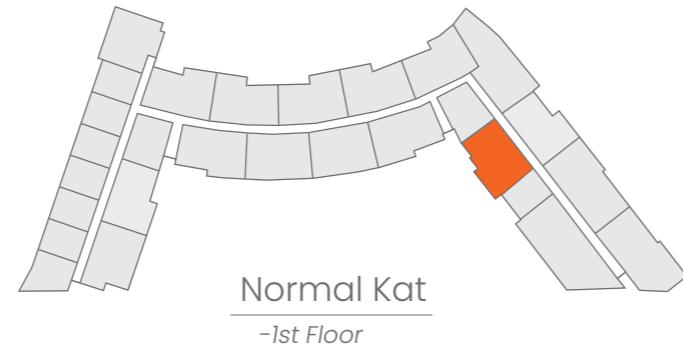
Details	m ²
Gross	146.12
Net	80.38
1 Living Room	25.00
2 Kitchen	10.12
3 Room 1	18.32
4 Room 2	10.96
5 Hall	8.66
6 Bathroom & WC 1	4.19
7 Bathroom & WC 2	3.12
8 Balcony	4.97

KAT PLANLARI

2+1 Flat Est



Detay Bilgileri	m ²
Brüt	139.17
Net	79.61
1 Salon	25.00
2 Mutfak	10.12
3 Oda 1	18.32
4 Oda 2	10.96
5 Hol	8.66
6 Banyo & WC 1	3.12
7 Banyo & WC 2	3.42
8 Teras	14.15



FLOOR PLANS

2+1 Flat Est



Lüks ve modern mimariyi geniş yaşam alanlarında sunuyoruz...

Offering luxury and modern architecture in large living spaces...

Details	m ²
Gross	139.17
Net	79.61
1 Living Room	25.00
2 Kitchen	10.12
3 Room 1	18.32
4 Room 2	10.96
5 Hall	8.66
6 Bathroom & WC 1	3.12
7 Bathroom & WC 2	3.42
8 Terrace	14.15

2+1

Flat Et

2+1

Flat Et



Lüks ve modern mimariyi geniş yaşam alanlarında sunuyoruz...

Offering luxury and modern architecture in large living spaces...

Detay Bilgileri

	m ²
Brüt	139.17
Net	81.16

1	Salon	25.26
2	Mutfak	10.61
3	Oda 1	17.95
4	Oda 2	11.03
5	Hol	9.32
6	Banyo & WC 1	3.21
7	Banyo & WC 2	3.06
8	Teras	14.15



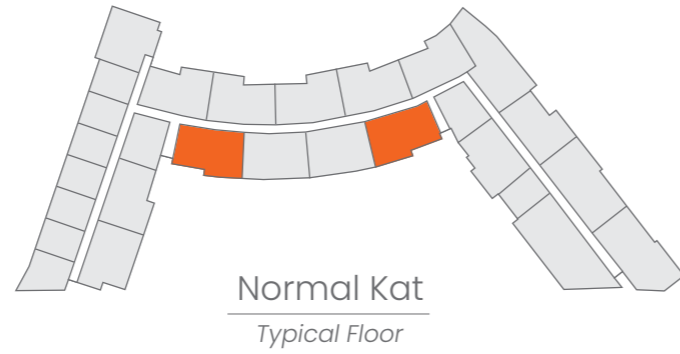
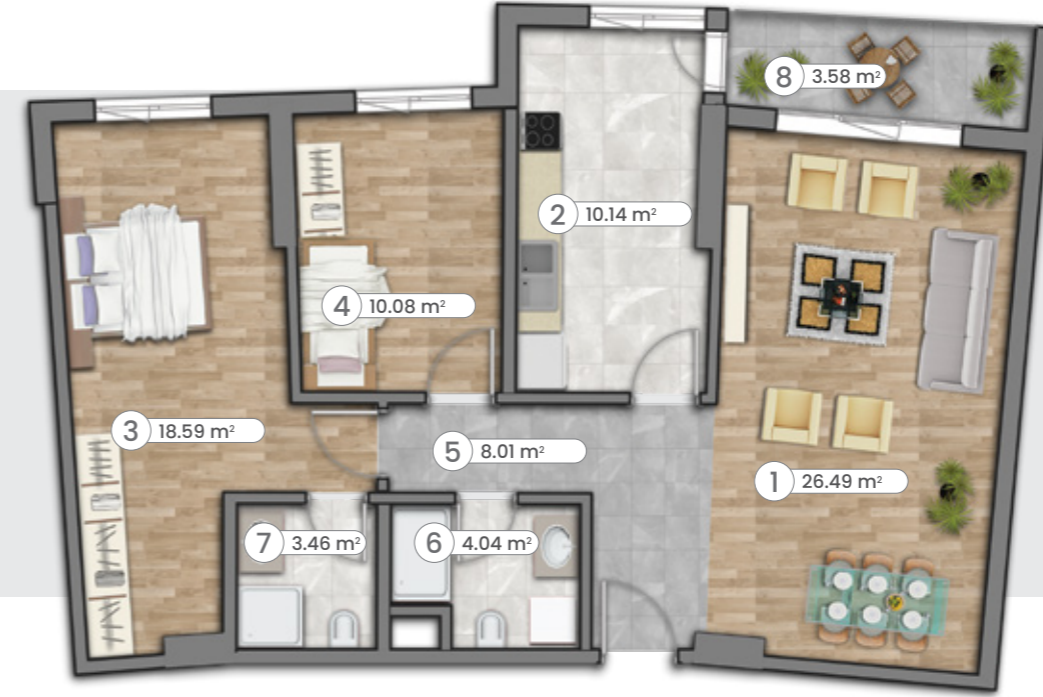
Details

	m ²
Gross	139.17
Net	81.16

1	Living Room	25.26
2	Kitchen	10.61
3	Room 1	17.95
4	Room 2	11.03
5	Hall	9.32
6	Bathroom & WC 1	3.21
7	Bathroom & WC 2	3.06
8	Terrace	14.15

2+1
Flat F

Detay Bilgileri	m ²
Brüt	145.48
Net	80.81
1 Salon	26.49
2 Mutfak	10.14
3 Oda 1	18.59
4 Oda 2	10.08
5 Hol	8.01
6 Banyo & WC 1	4.04
7 Banyo & WC 2	3.46
8 Balkon	3.58

2+1
Flat F

Lüks ve modern mimariyi geniş yaşam alanlarında sunuyoruz...

Offering luxury and modern architecture in large living spaces...

Details	m ²
Gross	145.48
Net	80.81
1 Living Room	26.49
2 Kitchen	10.14
3 Room 1	18.59
4 Room 2	10.08
5 Hall	8.01
6 Bathroom & WC 1	4.04
7 Bathroom & WC 2	3.46
8 Balcony	3.58

2+1
Flat Gt2+1
Flat Gt

Lüks ve modern mimariyi geniş yaşam alanlarında sunuyoruz...

Offering luxury and modern architecture in large living spaces...

Detay Bilgileri

	m ²
Brüt	116.26
Net	78.30

1	Salon + Mutfak	34.12
2	Oda 1	18.59
3	Oda 2	10.08
4	Banyo & WC	7.50
5	Hol	8.01
6	Teras	14.79



Details

	m ²
Gross	116.26
Net	78.30

1	Living Room + Kitchen	34.12
2	Room 1	18.59
3	Room 2	10.08
4	Bathroom & WC	7.50
5	Hall	8.01
6	Terrace	14.79

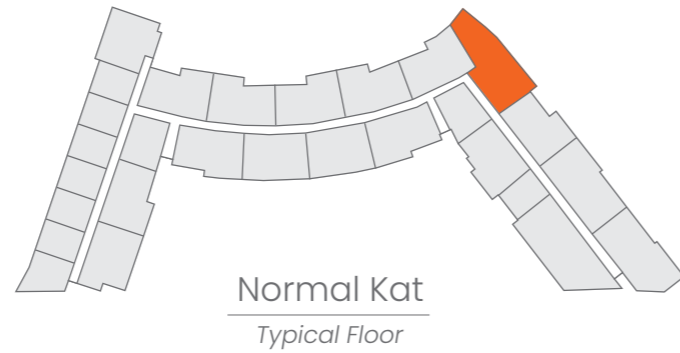
3+1
Flat A3+1
Flat A

*Konfor ve huzurun
ferahlıkla buluştuğu kaliteli
bir yaşam alanı...*

*A high quality living space
where comfort and serenity
meet spaciousness...*

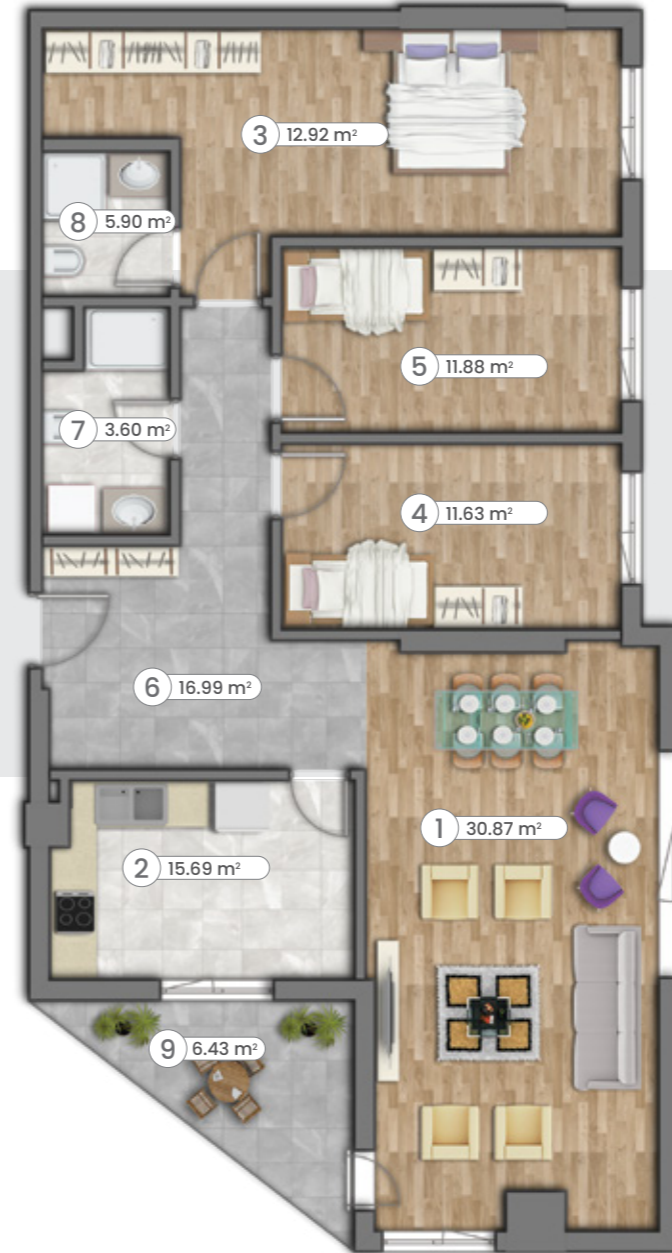
Detay Bilgileri

	m ²
Brüt	205.31
Net	114.06
1 Salon	32.42
2 Mutfak	11.45
3 Oda 1	22.74
4 Oda 2	12.97
5 Oda 3	12.88
6 Hol	13.20
7 Banyo & WC 1	4.80
8 Banyo & WC 2	3.60
9 Balkon	4.69
10 Depo	2.1



Details

	m ²
Gross	205.31
Net	114.06
1 Living Room	32.42
2 Kitchen	11.45
3 Room 1	22.74
4 Room 2	12.97
5 Room 3	12.88
6 Hall	13.20
7 Bathroom & WC 1	4.80
8 Bathroom & WC 2	3.60
9 Balcony	4.69
10 Storage	2.1

3+1
Flat B3+1
Flat B

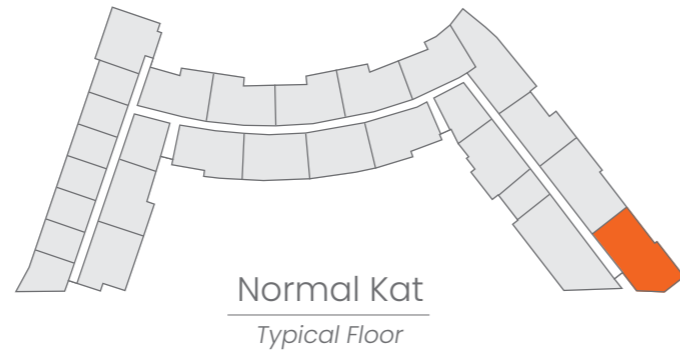
*Konfor ve huzurun
ferahlıkla buluştuğu kaliteli
bir yaşam alanı...*

*A high quality living space
where comfort and serenity
meet spaciousness...*

Detay Bilgileri

	m ²
Brüt	197.05
Net	109.47

1	Salon	30.87
2	Mutfak	15.69
3	Oda 1	12.92
4	Oda 2	11.63
5	Oda 3	11.88
6	Hol	16.99
7	Banyo & WC 1	3.60
8	Banyo & WC 2	5.90
9	Balkon	6.43
10	Depo	2.1



Details

	m ²
Gross	197.05
Net	109.47

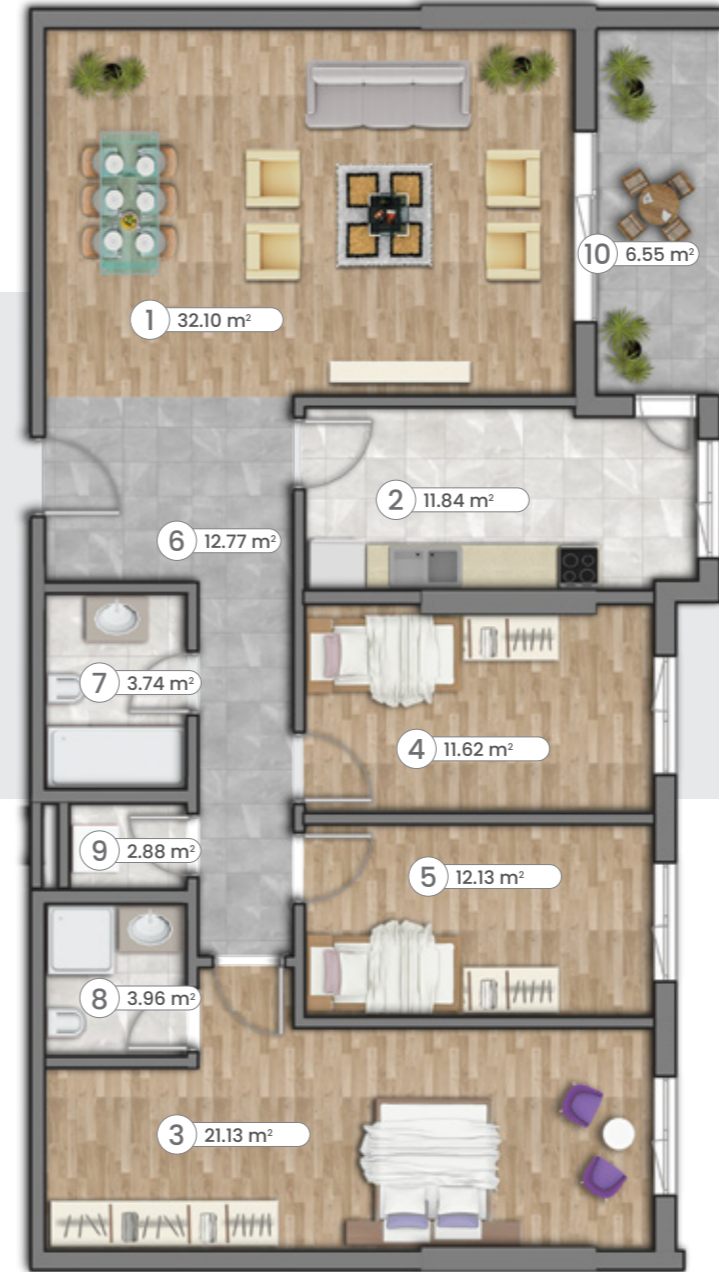
1	Living Room	30.87
2	Kitchen	15.69
3	Room 1	12.92
4	Room 2	11.63
5	Room 3	11.88
6	Hall	16.99
7	Bathroom & WC 1	3.60
8	Bathroom & WC 2	5.90
9	Balcony	6.43
10	Storage	2.1

KAT PLANLARI

FLOOR PLANS

3+1 Flat C

3+1 Flat C



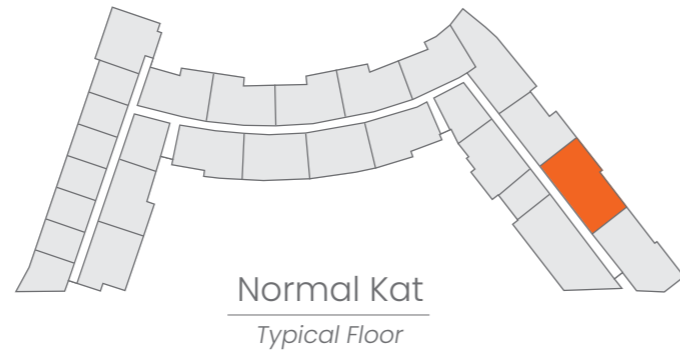
Konfor ve huzurun ferahlıkla buluştuğu kaliteli bir yaşam alanı...

A high quality living space where comfort and serenity meet spaciousness...

Detay Bilgileri

	m ²
Brüt	201.92
Net	112.17

1	Salon	32.10
2	Mutfak	11.84
3	Oda 1	21.13
4	Oda 2	11.62
5	Oda 3	12.13
6	Hol	12.77
7	Banyo & WC 1	3.74
8	Banyo & WC 2	3.96
9	Çamaşır Odası	2.88
10	Balkon	6.55
11	Depo	2.1



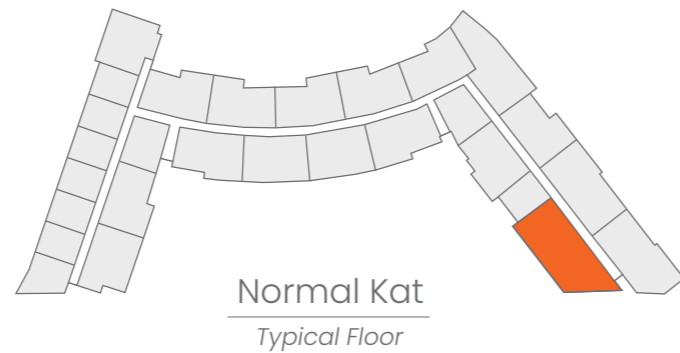
Details

	m ²
Gross	201.92
Net	112.17

1	Living Room	32.10
2	Kitchen	11.84
3	Room 1	21.13
4	Room 2	11.62
5	Room 3	12.13
6	Hall	12.77
7	Bathroom & WC 1	3.74
8	Bathroom & WC 2	3.96
9	Laundry Room	2.88
10	Balcony	6.55
11	Storage	2.1

4+1
Flat4+1
Flat

Detay Bilgileri	m ²
Brüt	246.83
Net	137.13
1 Salon	34.74
2 Mutfak	13.46
3 Oda 1	22.18
4 Oda 2	13.30
5 Oda 3	12.88
6 Oda 4	13.12
7 Hol	14.31
8 Banyo & WC 1	3.92
9 Banyo & WC 2	6.44
10 Çamaşır Odası	2.79
11 Balkon	7.47
12 Depo	2.1

Normal Kat
Typical Floor

*Geniş, Estetik, Kullanışlı.
Her ailenin hayalindeki
huzurlu yuva.*

*Large, Aesthetic, Functional.
The dream home for every
family.*

Details	m ²
Gross	246.83
Net	137.13
1 Living Room	34.74
2 Kitchen	13.46
3 Room 1	22.18
4 Room 2	13.30
5 Room 3	12.88
6 Room 4	13.12
7 Hall	14.31
8 Bathroom & WC 1	3.92
9 Bathroom & WC 2	6.44
10 Laundry Room	2.79
11 Balcony	7.47
12 Storage	2.1

KAT PLANLARI

4+1 Flat T



Detay Bilgileri

	m ²
Brüt	240.76
Net	129.23

1	Salon	25.18
2	Mutfak	15.08
3	Oda 1	22.18
4	Oda 2	12.88
5	Oda 3	13.12
6	Oda 4	13.60
7	Hol	14.04
8	Banyo & WC 1	6.71
9	Banyo & WC 2	3.74
10	Çamaşır Odası	2.70
11	Balkon	7.55
12	Teras	16.29
13	Depo	2.1



FLOOR PLANS

4+1 Flat T



*Geniş, Estetik, Kullanışlı.
Her ailenin hayalindeki
huzurlu yuva.*

*Large, Aesthetic, Functional.
The dream home for every
family.*

Details

	m ²
Gross	240.76
Net	129.23

1	Living Room	25.18
2	Kitchen	15.08
3	Room 1	22.18
4	Room 2	12.88
5	Room 3	13.12
6	Room 4	13.60
7	Hall	14.04
8	Bathroom & WC 1	6.71
9	Bathroom & WC 2	3.74
10	Bathroom & WC 3	2.70
11	Balcony	7.55
12	Terrace	16.29
13	Storage	2.1

Home Office - Kat Planları

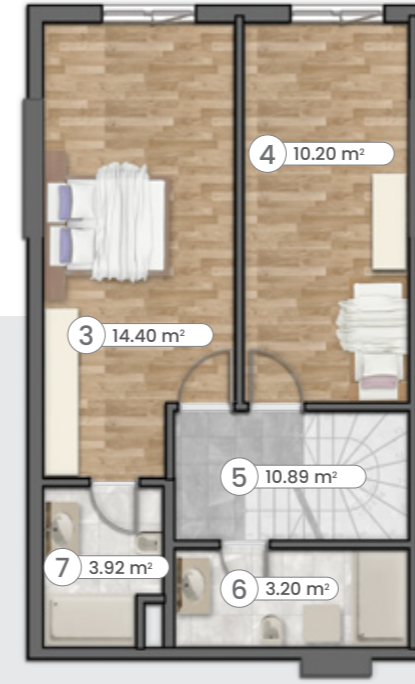
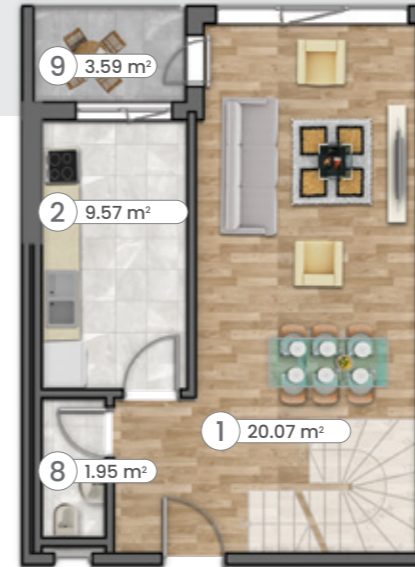
Home Office - Floor Plans



Tor Beylikdüzü'nde her istek ve ihtiyaca uygun daire seçenekleri sizi bekliyor.

Flat options that appeal to every need await you at Tor Beylikdüzü.



2+1
OF-12+1
OF-1Üst Kat
UpstairsAlt Kat
Downstairs

*İş ve ev yaşamlarınızı
tek merkezde birleştirin.*

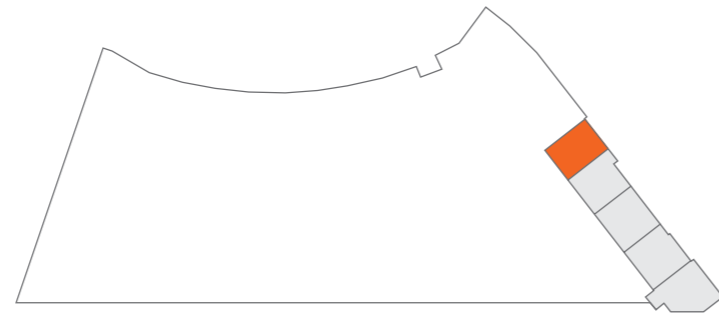
*Combining work and home in
one lifestyle.*

Detay Bilgileri

m²

Brüt	160.21
Net	74.20

1	Salon	20.07
2	Mutfak	9.57
3	Oda 1	14.40
4	Oda 2	10.20
5	Hol	10.89
6	Banyo & WC 1	3.20
7	Banyo & WC 2	3.92
8	WC	1.95
9	Balkon	3.59
10	Depo	2.1



-2. Kat

-2nd Floor

Details

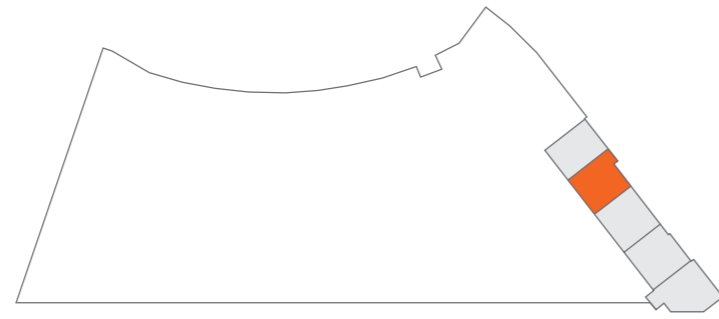
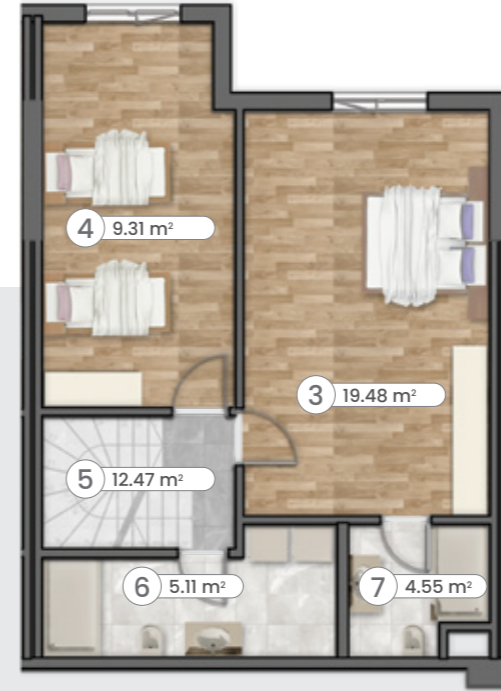
m²

Gross	160.21
Net	74.20

1	Living Room	20.07
2	Kitchen	9.57
3	Room 1	14.40
4	Room 2	10.20
5	Hall	10.89
6	Bathroom & WC 1	3.20
7	Bathroom & WC 2	3.92
8	WC	1.95
9	Balcony	3.59
10	Storage	2.1

2+1
OF-22+1
OF-2

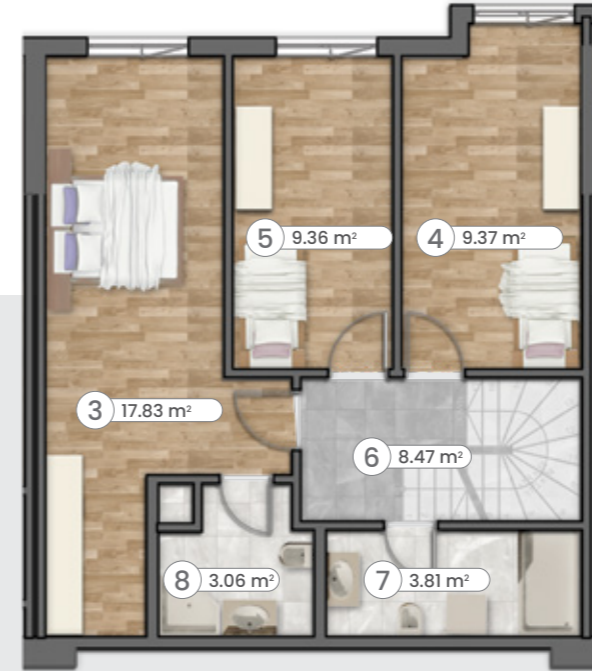
Detay Bilgileri		m ²
Brüt		179.16
Net		90.47
1	Salon	27.45
2	Mutfak	8.83
3	Oda 1	19.48
4	Oda 2	9.31
5	Hol	12.47
6	Banyo & WC 1	5.11
7	Banyo & WC 2	4.55
8	WC	1.80
9	Balkon	4.30
10	Depo	2.1

-2. Kat
-2nd FloorÜst Kat
UpstairsAlt Kat
Downstairs

*İş ve ev yaşamlarınızı
tek merkezde birleştirin.*

*Combining work and home in
one lifestyle.*

Details		m ²
Gross		179.16
Net		90.47
1	Living Room	27.45
2	Kitchen	8.83
3	Room 1	19.48
4	Room 2	9.31
5	Hall	12.47
6	Bathroom & WC 1	5.11
7	Bathroom & WC 2	4.55
8	WC	1.80
9	Balcony	4.30
10	Storage	2.1

3+1
OF-33+1
OF-3Üst Kat
Upstairs

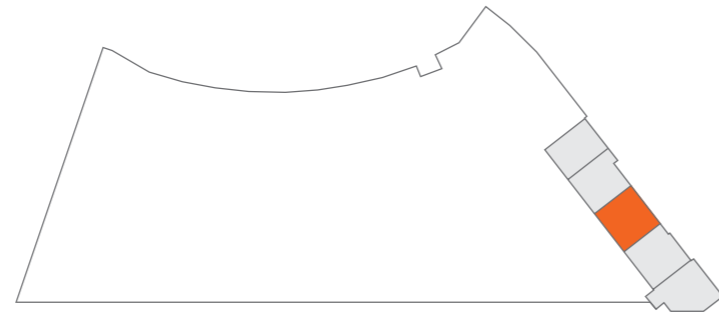
*İçine iki farklı dünyayı
siğirecek kadar geniş.*

*Spacious enough to combine
work and home.*

Detay Bilgileri

	m ²
Brüt	194.25
Net	95.81

1	Salon	31.13
2	Mutfak	11.02
3	Oda 1	17.83
4	Oda 2	9.37
5	Oda 3	9.36
6	Hol	8.47
7	Banyo & WC 1	3.81
8	Banyo & WC 2	3.06
9	WC	1.76
10	Balkon	6.30
11	Depo	2.1

-2. Kat
-2nd FloorAlt Kat
Downstairs

Details

	m ²
Gross	194.25
Net	95.81

1	Living Room	31.13
2	Kitchen	11.02
3	Room 1	17.83
4	Room 2	9.37
5	Room 3	9.36
6	Hall	8.47
7	Bathroom & WC 1	3.81
8	Bathroom & WC 2	3.06
9	WC	1.76
10	Balcony	6.30
11	Storage	2.1

KAT PLANLARI

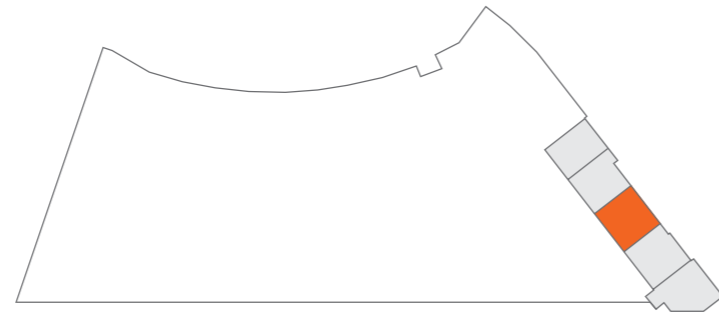
3+1 OF-4



Detay Bilgileri

	m ²
Brüt	193.78
Net	102.33

1	Salon	30.89
2	Mutfak	10.92
3	Oda 1	17.83
4	Oda 2	9.38
5	Oda 3	9.37
6	Hol	10.36
7	Banyo & WC 1	3.06
8	Banyo & WC 2	3.14
9	Çamaşır Odası	0.67
10	Balkon	6.00
İİ	Depo	2.1

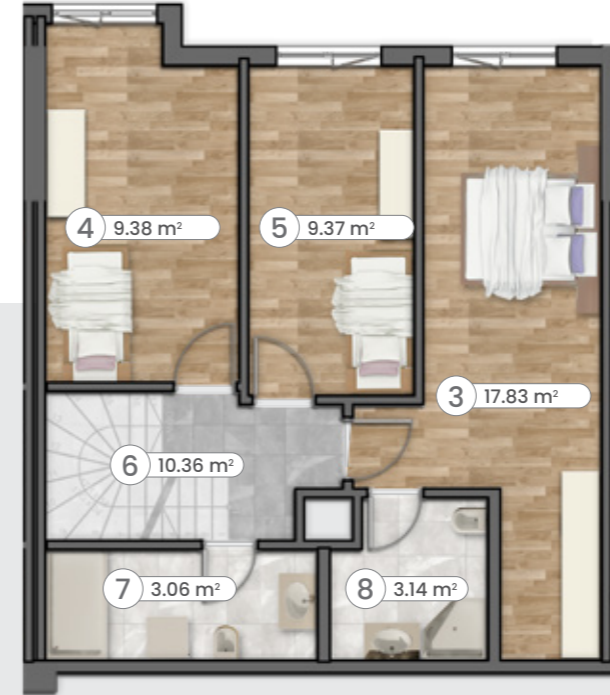


-2. Kat

-2nd Floor

FLOOR PLANS

3+1 OF-4



Üst Kat
Upstairs

*İçine iki farklı dünyayı
siğdiracak kadar geniş.*

*Spacious enough to combine
work and home.*



Alt Kat
Downstairs

Details

	m ²
Gross	193.78
Net	102.33

1	Living Room	30.89
2	Kitchen	10.92
3	Room 1	17.83
4	Room 2	9.38
5	Room 3	9.37
6	Hall	10.36
7	Bathroom & WC 1	3.06
8	Bathroom & WC 2	3.14
9	Laundry Room	0.67
10	Balcony	6.00
İİ	Storage	2.1

KAT PLANLARI

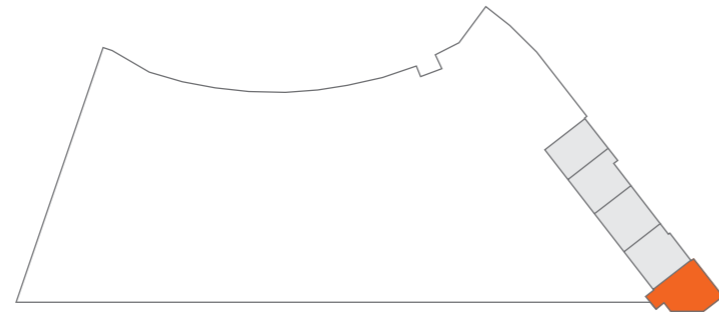
3+1 OF-5



Detay Bilgileri

	m ²
Brüt	172.24
Net	63.05

1	Salon	18.9
2	Mutfak	4.33
3	Oda 1	6.11
4	Oda 2	5.93
5	Oda 3	4.96
6	Hol	14.08
7	Banyo & WC 1	5.86
8	Banyo & WC 2	2.88
9	Balkon	4.65
10	Depo	2.1

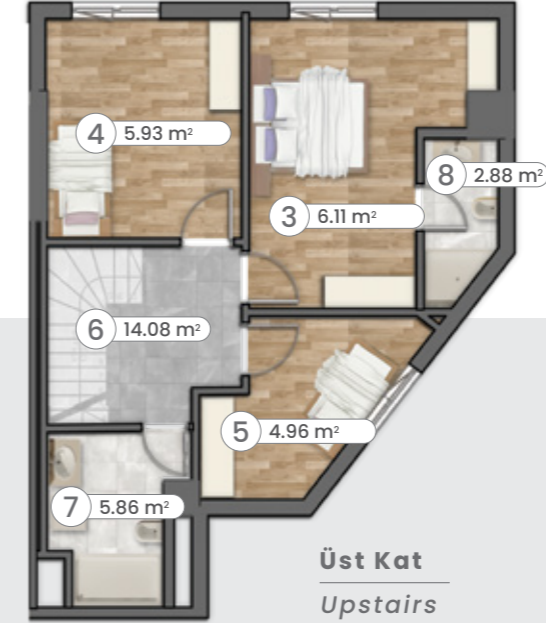


-2. Kat

-2nd Floor

FLOOR PLANS

3+1 OF-5



*İçine iki farklı dünyayı
siğdirecek kadar geniş.*

*Spacious enough to combine
work and home.*

Details

	m ²
Gross	172.24
Net	63.05

1	Living Room	18.9
2	Kitchen	4.33
3	Room 1	6.11
4	Room 2	5.93
5	Room 3	4.96
6	Hall	14.08
7	Bathroom & WC 1	5.86
8	Bathroom & WC 2	2.88
9	Balcony	4.65
10	Storage	2.1

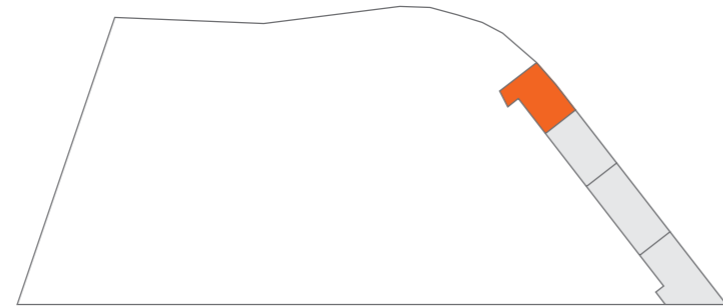
2+1
OF-62+1
OF-6

*İş ve ev yaşamlarınızı
tek merkezde birleştirin.*

*Combining work and home in
one lifestyle.*

Detay Bilgileri

	m ²
Brüt	140.84
Net	75.09
1 Salon	23.88
2 Mutfak	7.50
3 Oda 1	18.06
4 Oda 2	8.98
5 Hol	8.04
6 Banyo & WC 1	4.07
7 Banyo & WC 2	4.56
8 Teras	22.22
9 Depo	2.1



-3. Kat

-3rd Floor

Details

	m ²
Gross	140.84
Net	75.09
1 Living Room	23.88
2 Kitchen	7.50
3 Room 1	18.06
4 Room 2	8.98
5 Hall	8.04
6 Bathroom & WC 1	4.07
7 Bathroom & WC 2	4.56
8 Terrace	22.22
9 Storage	2.1

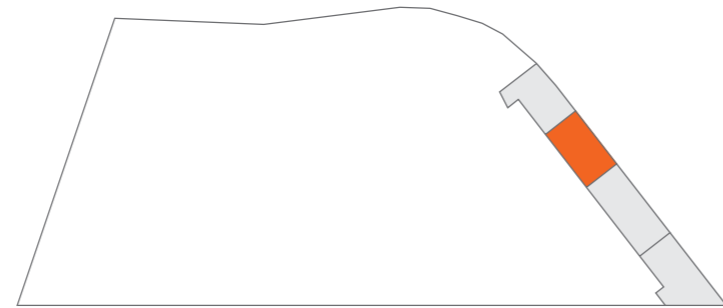
2+1
OF-72+1
OF-7

*İş ve ev yaşamlarınızı
tek merkezde birleştirin.*

*Combining work and home in
one lifestyle.*

Detay Bilgileri

	m ²
Brüt	142.15
Net	76.89
1 Salon	25.25
2 Mutfak	7.87
3 Oda 1	17.85
4 Oda 2	10.11
5 Hol	9.12
6 Banyo & WC 1	3.63
7 Banyo & WC 2	3.06
8 Teras	23.37
9 Depo	2.1

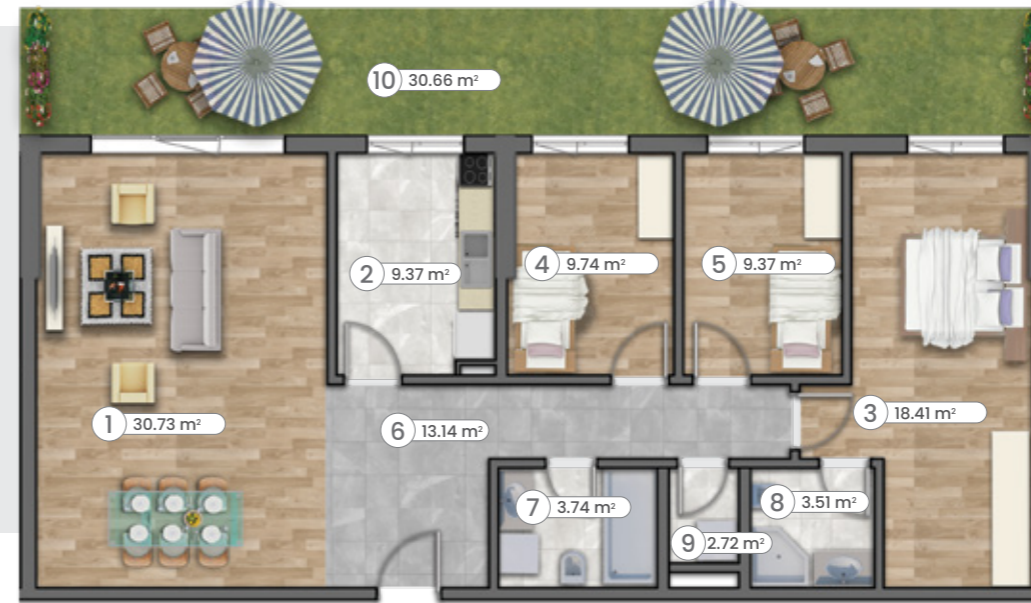


-3. Kat

-3rd Floor

Details

	m ²
Gross	142.15
Net	76.89
1 Living Room	25.25
2 Kitchen	7.87
3 Room 1	17.85
4 Room 2	10.11
5 Hall	9.12
6 Bathroom & WC 1	3.63
7 Bathroom & WC 2	3.06
8 Terrace	23.37
9 Storage	2.1

3+1
OF-83+1
OF-8

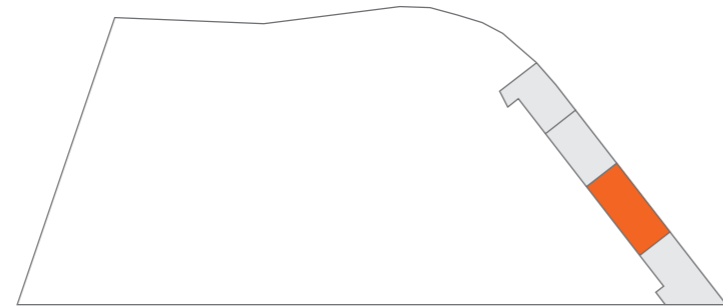
*İçine iki farklı dünyayı
siğirecek kadar geniş.*

*Spacious enough to combine
work and home.*

Detay Bilgileri

	m ²
Brüt	187.17
Net	100.73

1	Salon	30.73
2	Mutfak	9.37
3	Oda 1	18.41
4	Oda 2	9.74
5	Oda 3	9.37
6	Hol	13.14
7	Banyo & WC 1	3.74
8	Banyo & WC 2	3.51
9	Çamaşır Odası	2.72
10	Teras	30.66
11	Depo	2.1



-3. Kat

-3rd Floor

Details

	m ²
Brüt	187.17
Net	100.73

1	Living Room	30.73
2	Kitchen	9.37
3	Room 1	18.41
4	Room 2	9.74
5	Room 3	9.37
6	Hall	13.14
7	Bathroom & WC 1	3.74
8	Bathroom & WC 2	3.51
9	Laundry Room	2.72
10	Terrace	30.66
11	Storage	2.1

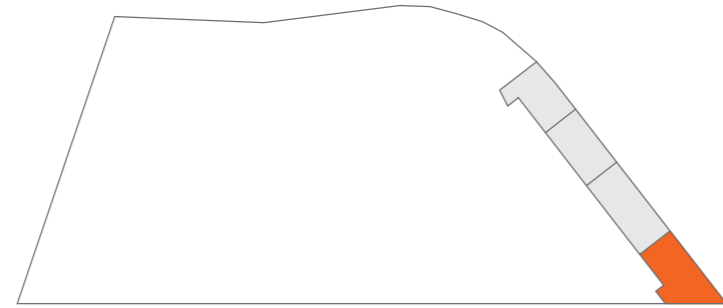
2+1
OF-92+1
OF-9

*İş ve ev yaşamlarınızı
tek merkezde birleştirin.*

*Combining work and home in
one lifestyle.*

Detay Bilgileri

	m ²
Brüt	175.62
Net	86.49
1 Salon	32.74
2 Mutfak	9.53
3 Oda 1	18.06
4 Oda 2	10.13
5 Hol	9.03
6 Banyo & WC 1	3.49
7 Banyo & WC 2	3.51
8 Teras	30.74
9 Depo	2.1



-3. Kat

-3rd Floor

Details

	m ²
Gross	175.62
Net	86.49
1 Living Room	32.74
2 Kitchen	9.53
3 Room 1	18.06
4 Room 2	10.13
5 Hall	9.03
6 Bathroom & WC 1	3.49
7 Bathroom & WC 2	3.51
8 Terrace	30.74
9 Storage	2.1

PROJE LOKASYONU



Hayatın Merkezinde Yaşayın

Tor Beylikdüzü, İstanbul'un en hızlı gelişen ve değerlendirilen bölgesi Beylikdüzü'nde E5 ve E6 bağlantı yollarının tam ortasında yer alıyor. Kültür, yaşam, alışveriş, sağlık ve eğitim merkezleri ile deniz ve marinaya olan yakın konumuyla dışlardaki şehirli ve sakin yaşamı bir araya getiriyor.

Live in the Heart of Life

Rising in the fastest developing and growing district of Istanbul, Tor Beylikdüzü is located on the intersection of E5 and E6 highways. With its excellent location where you will be closely located to cultural, shopping, health and education centers as well as sea and marina, Tor Beylikdüzü combines the dynamism of city and peace of nature in a life of dreams.

Tor Beylikdüzü

Yakuplu Mah. Barış Cad. No: 11/13
34524 Beylikdüzü/İstanbul

PROJECT LOCATION

West Istanbul Marina <i>West Istanbul Marina</i>	5,0 km
Tüyap <i>TÜYAP Fair and Congress Center</i>	7,6 km
Migros <i>Migros Shopping Center</i>	3,7 km
Metrobüs <i>Metrobus Station</i>	3,2 km
Torium AVM <i>Torium Shopping Center</i>	3,3 km
Beylikdüzü Kültür Merkezi <i>Beylikduzu Arts and Cultural Center</i>	5,3 km
Medicana International Hospital <i>Medicana International Hospital</i>	4,8 km
Birinci International Hastanesi <i>First International Hospital</i>	1,2 km
İstanbul Havaalanı <i>Istanbul Airport</i>	51 km
Ambarlı Limanı <i>Ambarlı Harbour</i>	7,6 km
International Okullar International Schools	
İhsan International School	5,6 km
Rumeli International Schools	4,3 km
Elite Academy	4,3 km
Harvest International Schools	5,9 km
Yemen International School	3,9 km



www.torbeylikduzu.com

Yakuplu Mah. Barış Cad. No: 11/13 34524 Beylikdüzü/İstanbul

+90 212 945 06 07 - info@torbeylikduzu.com

